

# Micergy

## POWERLINK SERIES - MP2

The Most Powerful Pay-As-You-Go Solar Home System Ever

DC | AC | OUTDOOR



**VeraSol**  
Certified

# PAYG SHS | 0% Tamper Rate, Powerful & Portable

Micergy MP2 adopts the highest quality level of the industry, it's user-friendly and tamper-resistant, perfect for to decrease the default rate and aftersales cost.

## Tamper-resistant control unit

- High-class industry design with no screw exposed
- Anti-tampering screws, professional tools required
- Iron box to protect the battery from being opened\*
- MCU program will self-destruct if violently opened

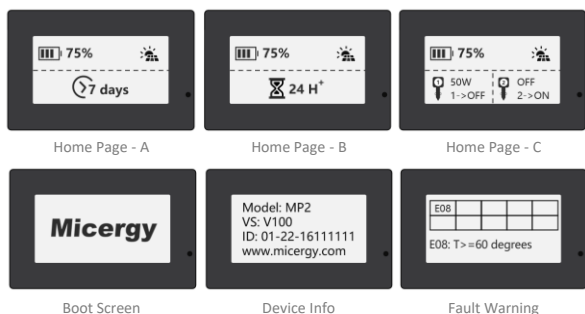


## 128\*64 dot matrix LCD display with backlight

Device information clearly showed including:

- Battery level: 1% to 100%
- Remaining credit days: >N Days
- Remaining battery usage time: >N Hours (Automatically calculated as per load plugged)
- Device information, software version, manufacturer information
- Fault warning information

\* Screen backlight turn off when no keypad touch for 30 seconds and turn on when there is keypad touch detected; The Home Page A, Home Page B and Home Page C will switch every 6 seconds



## 4 x 3 capacitive touch keypad with buzzer sound

- 4 x 3 capacitive touch keypad to ensure the sensitivity, stability and reliability of the product will not change due to changes in environmental conditions or long-term use
- Buzzer sound feedback when touching the keypad
- Buzzer sound remind when the battery level is low



**Touch & Buzzer**



## PAYG COMPATIBILITY



## Software Agnostic PAYG Hardware

Micergy MP2 is compatible with leading 3<sup>rd</sup> PAYG Platform including:

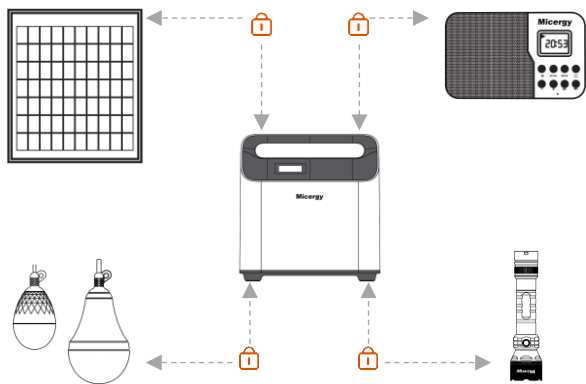
- Angaza
- Solaris
- Paygee
- Micergy PAYG Hub

\* Micergy can do compatible integration with customized PAYG device management software.

# Exclusive line of Micergy Original Accessories

Exclusive line of Micergy Original Accessories for Powerlink Series PAYG SHS

Only Micergy Powerlink Series PAYG SHS can charge and power the exclusive line of original accessories. besides, solar radio and torch designed with non-detachable battery and custom 6060 charging port.



## Two-way authentication, Triple protection

- Two-way authentication encryption protection between solar panel and MCU\*
- Two-way authentication encryption protection between battery protection board and MCU
- Two-way authentication encryption protection between MCU and accessories including LED lamp, LED Torch and FM Radio

\* Two-way authentication encryption between MCU and solar panel only available for MP2



1.5w Solar Lamp



8w Solar Lamp



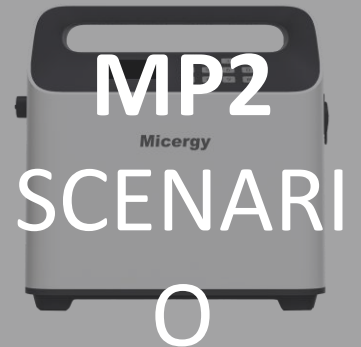
Solar Torch



Solar Radio

## MP2 PRODUCT TOUR

- 1 Solar Input, MPPT Charging**  
25-48V/6A DC solar input port with MPPT charging, faster and anywhere
- 2 AC/DC Adaptor Input Port**  
14.6V/6A AC/DC adaptor input port, charge your MP2 when there is a grid
- 3 12V Appliances Port**  
3 x 12V/2A barrel jack output ports for 12V appliances like Fan, TV, etc.
- 4 12V Lamp Port, Encrypted**  
2 x 12V/2A lamp port for Micergy exclusive encrypted LED lamp
- 5 Heat Dissipation Design**  
Elegant heat dissipation design for internal cooling of PCBA and battery



### DC

- Off-Grid Household
- Off-Grid SMEs, Kiosk
- Off-Grid Street Shop
- Off-Grid Church
- Off-Grid School
- Off-Grid Hospital

### AC

- Weak-Grid Household
- Weak-Grid SMEs, Kiosk
- Weak-Grid Street Shop
- AC back-up, UPS

### OUTDOOR

- Outdoor Camping
- Outdoor RV
- Outdoor Yacht



- 6 LCD Display with Backlight**  
128\*64 dot matrix LCD display with backlight to show device information
- 7 Capacitive Touch Keypad**  
4 x 3 capacitive touch keypad with buzzer sound, higher sensitivity and reliability
- 8 Portable Handle Design**  
Portable ergonomic design with strong handle, carry it everywhere you want
- 9 USB 2.0 Type A Output Port**  
2 x 5V Standard USB 2.0 Type A output port for phone charging
- 10 Cigarette Lighter Output Port**  
2 x 12V/12.5A cigarette lighter output ports for external inverter



Micergy

## DC LED TV



## DC FAN



## DC FREEZER



## DC/AC INVERTER



## MP2 GENERAL SPECIFICATIONS

Input Ports	1 x 25-48V/6A DC Input Port
	1 x 14.6V/6A AC Adaptor Input Port
Output Ports	1 x 5V/1A USB 2.0 Type A Output Port, Automatically detect and power when there is a load plugged in
	1 x 5V/2A USB 2.0 Type A Output Port, Automatically detect and power when there is a load plugged in
	3 x 12V/2A Barrel Jack Output Ports, Appliances Port, Automatically detect and power when there is a load plugged in
	2 x 12V/2A Barrel Jack Output Ports, Encrypted Lamp Port, Automatically detect and power when there is a load plugged in
Battery	2 x 12V/12.5A Cigarette Lighter Output Ports, Inverter Port, Manually switched on by keypad for energy-saving purpose
	Lithium Iron Phosphate, 26650 Type
	Battery Nominal Voltage, 12.8V
	Battery Capacity, 26.4Ah
	Long Lifecycle @ High Charge & Discharge Rate
Solar Panel	Over Charge Protection for Individual Cells and Sets of Parallel-Connected Cells
	Triple Protection: Hardware, Software and Housing Material Protection with Iron Box
	Battery meet IEC 62281, IEC 62133-2, UL 1642 and UN 38.3 Certification
	35V/160Wp @ STC
LED Lamp (150 lumen)	Built-in Encrypted Chip for Charging
	10m Charging Cable
	Aluminum Frame with Mounting Bracket
LED Lamp (1100 lumen)	Dimension: 1030*140*1015mm
	Lumen Efficacy: 110lm/w @ High Setting
	Dimmable with 3 Brightness Level
LED Lamp (150 lumen)	Encrypted Powering
	10m Cable
	Lumen Efficacy: 140lm/w @ High Setting
LED Lamp (1100 lumen)	Dimmable with 3 x Brightness Level
	Encrypted Powering
	10m Cable with Expansion Port

## PAY-AS-YOU-GO(OPTIONAL)

LCD Display	128*64 dot matrix LCD display with backlight
	- Battery level: 1% to 100%
	- Remaining credit days: >N Days
	- Remaining battery usage time: >N Hours (Automatically calculated as per load plugged)
Keypad	- Device information, software version, manufacturer information, Fault warning information
	4 x 3 capacitive touch keypad with buzzer sound
	- High sensitivity, stability and reliability
	- Buzzer sound feedback when touching the keypad
PAYG Compatibility	- Remaining battery usage time: >N Hours (Automatically calculated as per load plugged)
	- Buzzer sound remind when the battery level is low
	Software Agnostic PAYG Hardware, Already Compatible with 3rd Party PAYG Software:
	- Angaza
	- Solaris
	- Paygee
	* Micergy can do compatible integration with any customized PAYG software, Non-PAYG Version Also Available

## OPTIONAL ACCESSORIES

FM Radio	FM 76-108MHz, 50cm Telescopic Rod Antenna, 3.7V/2000mAh Non-Detachable Battery, Encrypted Charging
LED Torch	100 lumen, 3-level Dimmable, 3.7V/2000mAh Non-Detachable Battery, Encrypted Charging
Inverter	120W DC/AC Modified Sinewave Output Inverter, 150W Max
Fan	16" DC Standing Fan, Copper Brushless Motor, Oscillating with 3-Level Speed Control, 10W @ High Speed
TV	32" DC TV, ATV/T2/S2/CI+, 12W Power Consumption
Freezer	60L DC Freezer, R134a Refrigerant, 65mm Foam Layer Thickness, DC Outer Rotor Compressor, 50W

# Micergy

### Micergy Company Limited

Address: Building No.88, Liangtouwei Road, Qingxi Town, Dongguan City, Guangdong Province, China

Email: info@micergy.com ; Website: www.micergy.com

The Micergy word mark and logo are registered trade marks owned by Micergy Company Limited and its Subsidiaries. All features, functionality and other product specifications are subject to change without notice or obligation.

© 2020 Micergy Co., Ltd. All rights reserved.



www.micergy.com